



Moisture Register Products

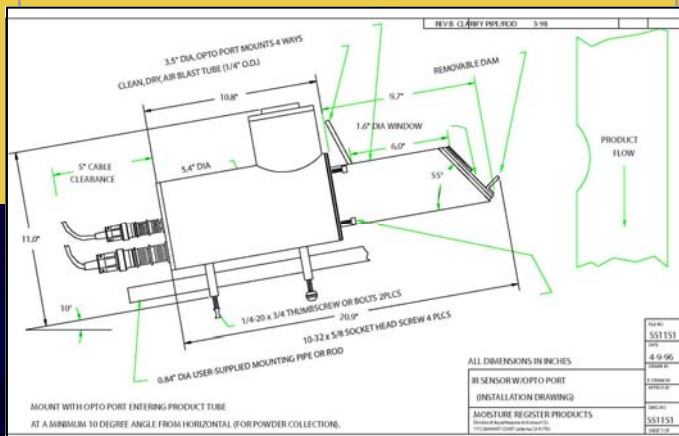
a division of AQUA Measure Instrument Co.

Opto-Port Automatic Sampling Sensor

The Opto-Port is a patented sampling device for use with the SMART II and BSP-901 Moisture Analyzing Systems. The Opto-Port allows for moisture measurement of powdered materials within a closed conveying system. The stainless steel Opto-Port is attached to a Moisture Register Products' NIR Sensor, and is installed directly into the conveying system. Product moisture is read through a quartz window at the end of the Opto-Port.

The Opto-Port with Air is mounted at an angle that allows material to build up on the stainless steel dam below the quartz window. After the accumulated material has been measured, a pulsed air stream is directed across the face of the window to clear the product away, allowing a new sample to accumulate. An adjustable source of clean, dry air is required.

The Opto-Port without Air is designed to be mounted directly through the sidewall of a conveyor or hopper, where new product is constantly being pushed across the face of the quartz window. Mounting of the Opto-Port must be done so as to avoid material build-up. When installing the Opto-Port without Air in a screw conveyor, it may be necessary to cut one or more flights to obtain this distance.



MOISTURE REGISTER PRODUCTS

An AQUA MEASURE Instrument Co. Division
1712 EARHART COURT
LA VERNE, CALIFORNIA 91750

Phone: 909.392.5833

Toll Free: 800.966.4788

Fax: 909.392.5838

Email: sales@aquameasure.com

www.moistureregisterproducts.com

